

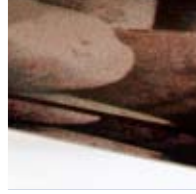
FEB
2008



MC# 6158-02
Glass sheet that has been printed on the back side with a digital image. This patented technology imparts a color picture, logo, or any text in high resolution on glass, needing no underlayer. Applications are for interior and exterior walls.



MC# 6158-01
Glass tiles that utilize a ribbed surface effect to create visual decoration. The combination of ribbing and graphics produces a color and image shift effect. Applications include pools, spas and for store and restaurant design.

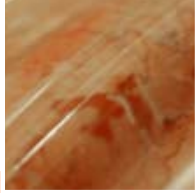


MC# 6159-01
Woven fabrics that use metal yarns as the weft. These polyurethane (PU; 16%) coated copper (74%), and silk (10%) fabrics are sold 1450 mm (57.1 in) wide in continuous lengths. Applications include costumes for theater and film.



MC# 6159-03
These polyurethane (PU; 16%) coated copper (68%), and cotton (16%) fabrics are sold 1500 mm (59.1 in) wide in continuous lengths. They find application as fashion and accessory materials.

MC# 6160-01
Marble and stone tile that has been shaped to create a range of 3-dimensional surfaces. Carrara Marble, Moleanos, Nembro and Rosso Verona stones are machined in one of four different wave designs. Used for any interior or exterior application.



MC# 6159-02
These copper (90%), and cotton (10%) fabrics are sold 1600 mm (63 in) wide in continuous lengths. They are stain resistant, non-flammable and anti-static. Applications include room dividers.



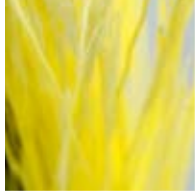
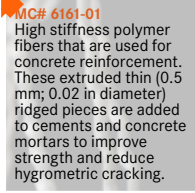
MC# 6160-02
Marble and stone tile that has been shaped to create a curved, wave-like surface topography. Currently used as wall and floor surfaces in shower and bath areas, but may also be used in any interior or exterior application.



MC# 6161-02
Colored, flexible thin filaments that are used as decorative inclusions in polymer panels and cast objects. Manufactured from polyvinyl chloride, they range in thickness from 0.17 to 1.8 mm (0.007 to 0.07 in) and in continuous lengths.



MC# 6161-01
High stiffness polymer fibers that are used for concrete reinforcement. These extruded thin (0.5 mm; 0.02 in diameter) ridged pieces are added to cements and concrete mortars to improve strength and reduce hygrometric cracking.



MC# 6163-01
Co-extruded metal profiles that incorporate a decorative, protective top surface. 100% aluminum is extruded on a substrate of cellulose acetate butyrate (CAB) into over 100 shapes. Used as edge banding for interior surfaces and furniture.



MC# 6162-01
Rubber flooring suitable for commercial spaces that incorporate natural fibers for performance and decorative effect. The flooring is a blend of synthetic and natural rubber with coconut fibers.

MC# 6162-02
Rubber flooring suitable for commercial spaces that have unique irregular surface textures for slip resistance and decorative effect. The flooring is a blend of synthetic and natural rubber, with mineral fillers. It is used as a flooring and wall surfaces.

